

To connect to the Depot System Terminal servers via the TS Gateway you will need Remote Desktop Connection version 6.1. This version comes on PC's with the following Operating systems with these service packs installed.

If your PC is not at these levels you will not have the proper software to connect.

Windows 7

Vista with **SP1** installed

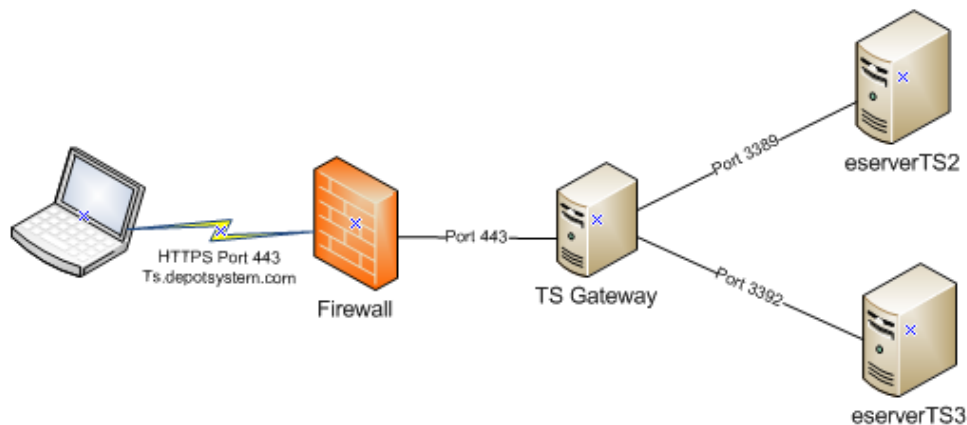
Windows XP with **SP3**

Windows 2008 server

You can download the **Remote Desktop Connection (Terminal Services Client 6.1) for Windows XP (KB952155)** for Windows XP with **SP2** computers from Microsoft.

Your internet firewall will need to allow port 443 out. Most firewalls allow this by default.

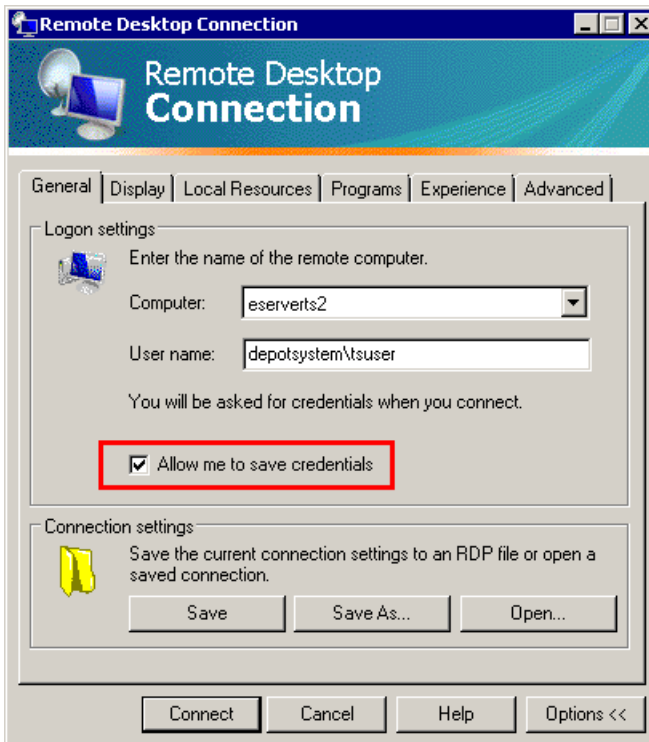
TS Gateway connection sample



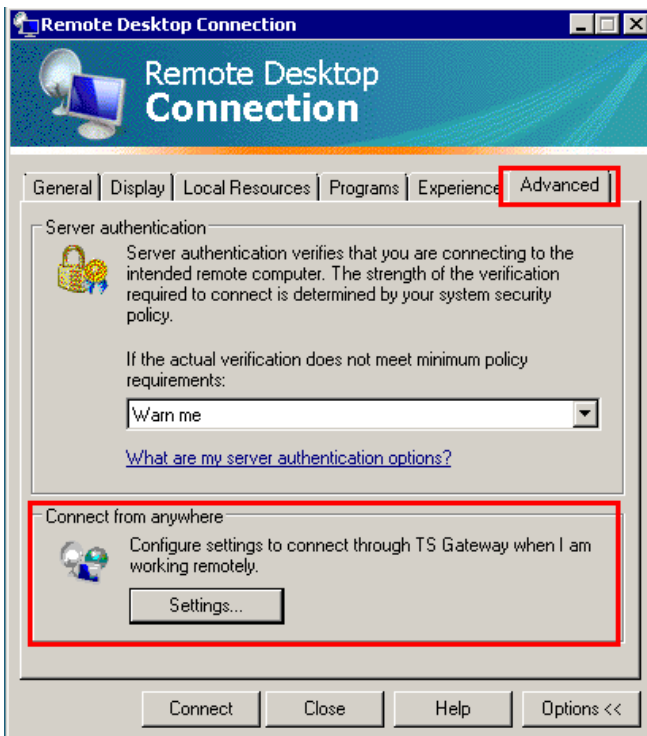
How configure the TS Gateway connection.

Go to **ACCESSORIES – SYSTEM TOOLS – REMOTE DESKTOP CONNECTION.**

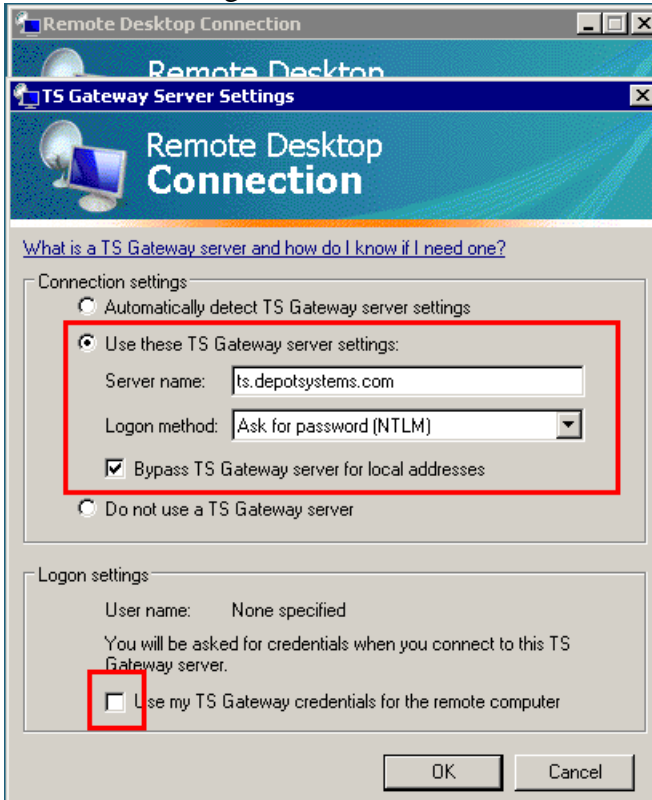
Set the screens to use the settings as shown below
This screen will use **depotssystem\tsuser** as the login for all PC's.



Click the Advanced Options. Fill in the Settings below.



Enter these settings in the Advanced Tab



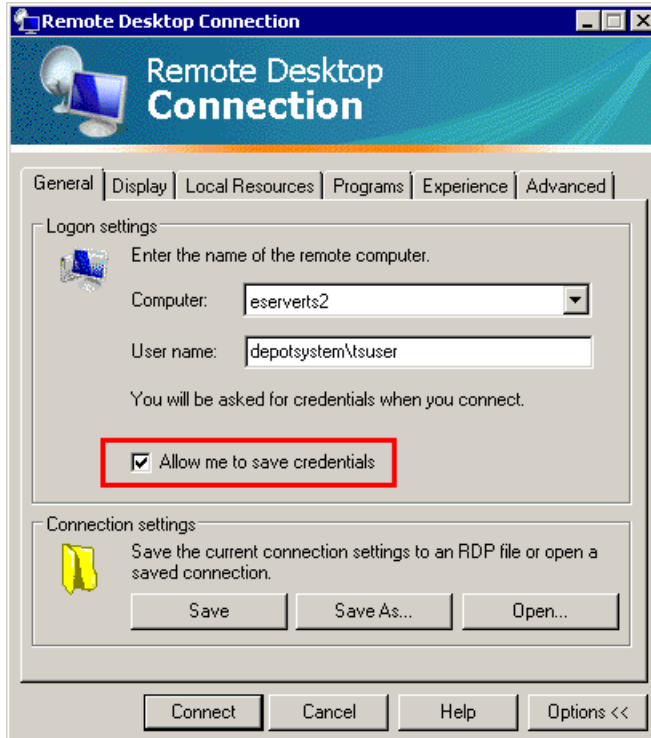
Click OK to save your settings. See the screen below to Connect to the terminal server.

Connecting For the First Time

The RDP will ask for the gateway user name and password as shown below. The gateway login for all users is

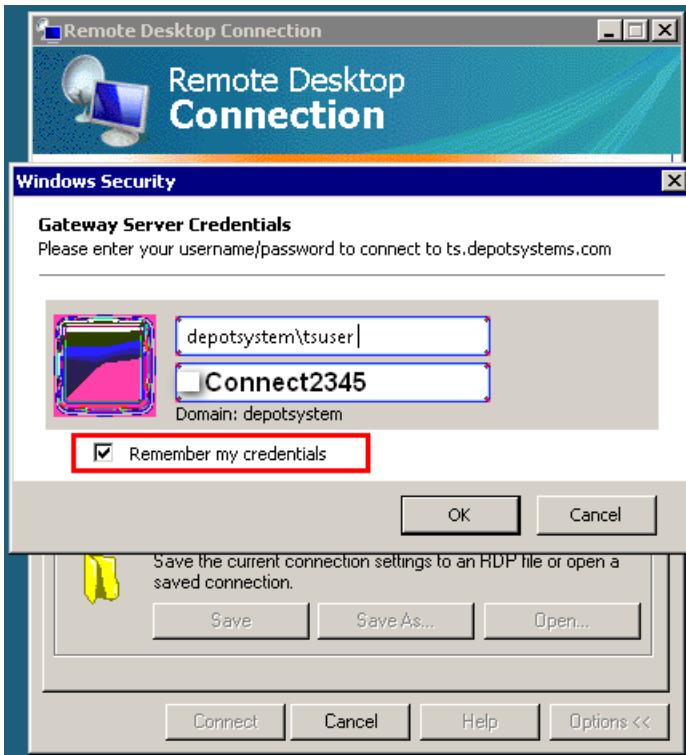
User: depotssystem\tsuser

Password: Connect2345 (This has a capital C)

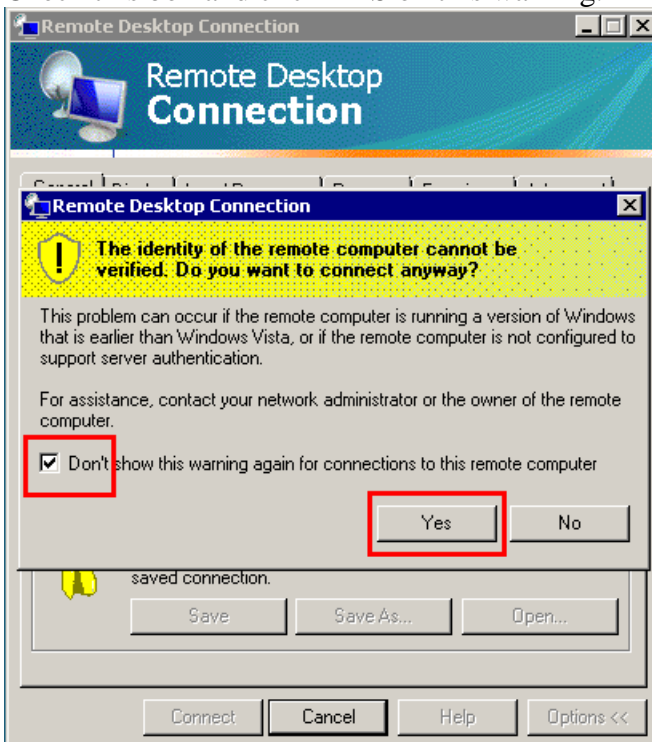


Click the **CONNECT** button to login.

You will be prompted for the GATEWAY login. Use what is shown in the screen for all PC's.

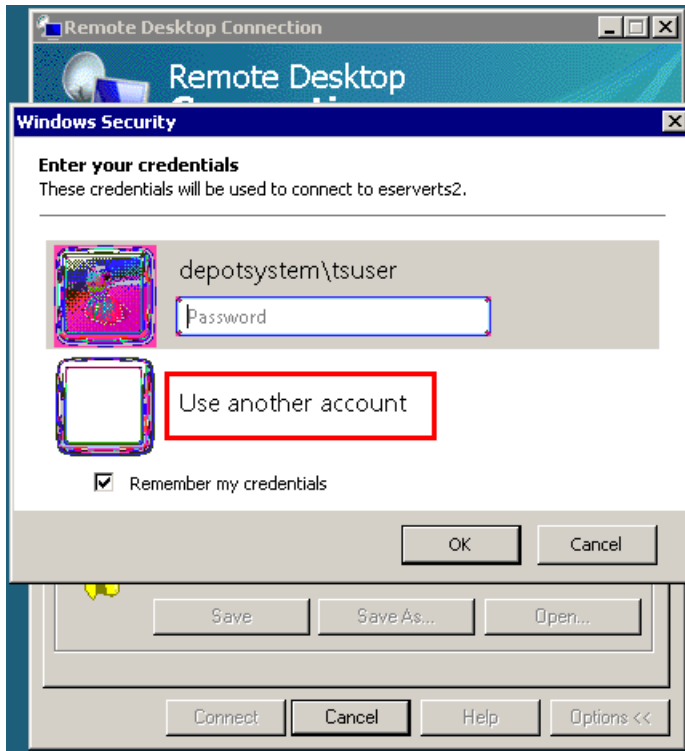


Check this box and click YES on this warning.

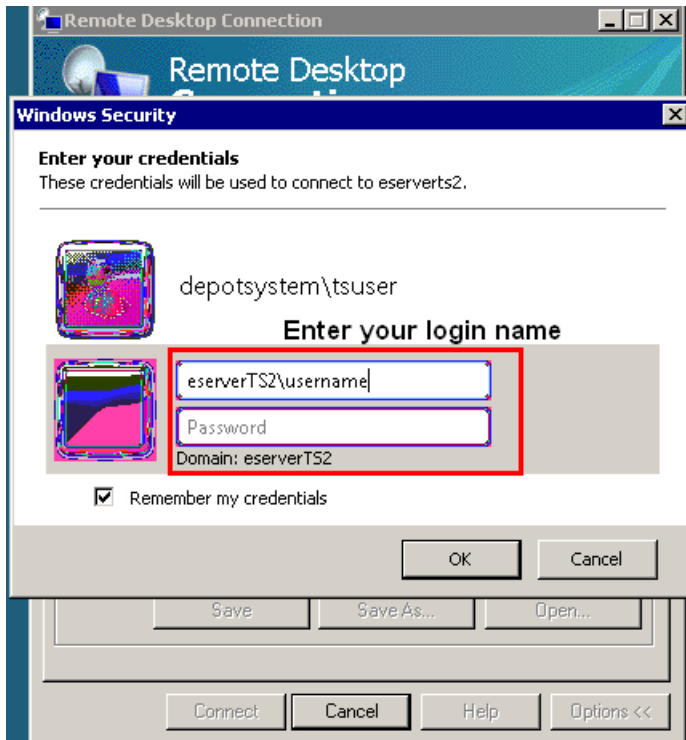


This is the login the Terminal Server. On this screen you will use your normal terminal server login that you had before.

Click the Use another account choice



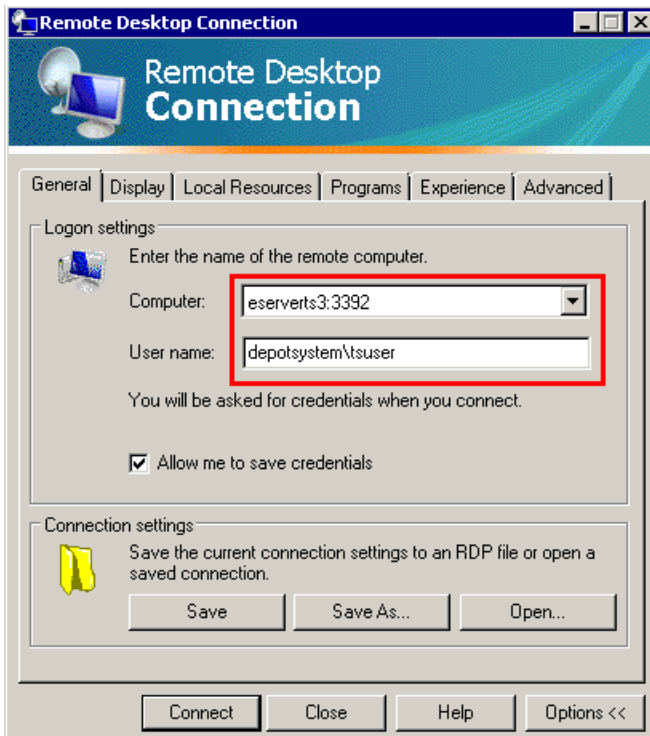
Now enter your terminal server login. Use the eserverTS2 on the login with your user ID.



Click OK, you should now be connected to the terminal server.
The next time you connect your gateway user ID and password should hold so you do not have to enter it every time.

How to Connect to eserverT3

For eserverTS3 use the port number as eserverTS3:3392
All other settings are the same.



Please contact Depot System Support if you need help or have any questions.

Phone: 440-943-4378 Ext 1

Email: support@depotsystems.com